

Documentation/Work Order I/C Electrical

Work Order #:

Report Date: 21/01/2005

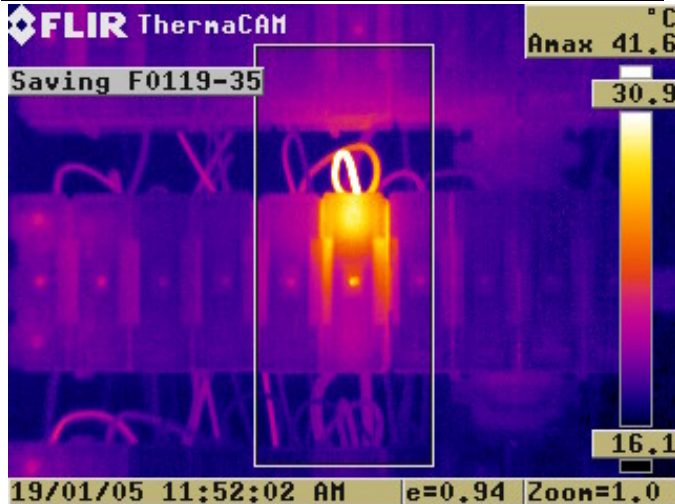
10293-5

Current Prob No: I/C Electrical/5

Location/Equipment Information	
Asset ID:	
Barcode:	
Location:	TDC AREA 2nd FLOOR DISTRIBUTION BOARD K
Component:	fuse
Problem:	yellow phase heating at connection on fuse carrier F6 for V1002 Agitator motor
Manufacturer:	MEM
Catalog No:	
Model No:	
Circuit Voltage:	500 Volts

Load Test Results	
Component Rated Load:	32 amps
yellow phase:	amps
blue phase:	amps
	amps

Thermal Information	
Operation Priority:	Critical to operation
Repair Priority:	2-Serious
Ambient:	16 C Environment: Indoors Wind:
Component Temperature On yellow phase:	42 C
blue phase Reference Temperature:	21 C
Temperature Rise Above Reference:	21 C
ANSI/EEE/NEMA Max Allowable Temp @ 100% Load	C
Est Temp Rise over reference @ 50% Load:	0
Est Temp Rise over reference @ 100% Load:	0



IR File: F0119-35.BMP

IR Date: 19/01/2005

Photo File: IMG2005-01-19-13.JPG

Photo Date: 19/01/2005

PLEASE FAX BACK AFTER REPAIR

Loss to Production

Yes No Unknown

Repair Information

Consequences of Failure:

Loss of DISTRIBUTION BOARD K

Repair Date:

Repaired By:

Root Cause:

Parts Req. Before Failure:

Repair

Procedure:

Parts Req. After Failure:

Repair Notes:

Repair Recommendation:

shut down inspect connections