

Equipment Baseline Trending Report By Inspection Order

Example Customer

Prior Inspection No: 10293 **January 19, 2005**
Current Inspection No: 10315 **April 19, 2005**

Operation Priority Key

CTO = Critical to operation
 ETO = Essential to operation
 NON = Non-essential to operation
 UNC = Un-Classified

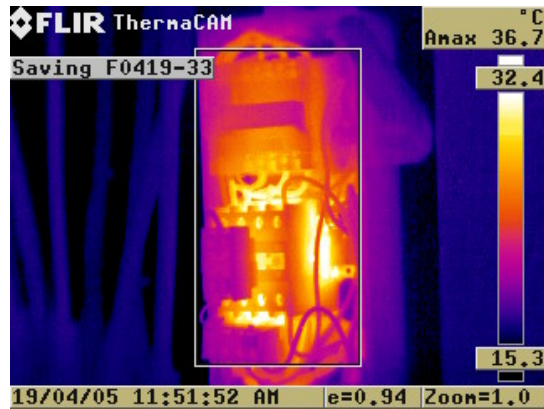
Report Date: 22/04/2005

TDC AREA \ 2nd FLOOR \ A1102 PNL AGITATOR

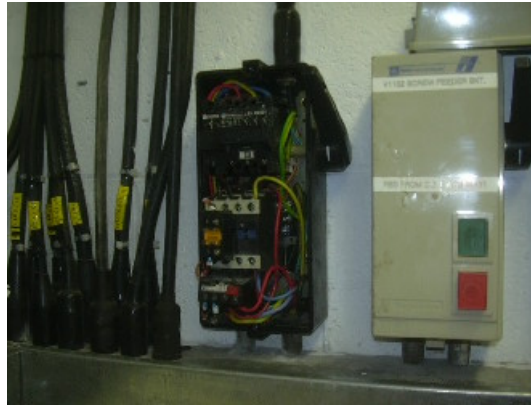
Equipment ID:

Barcode:

Manufacturer:

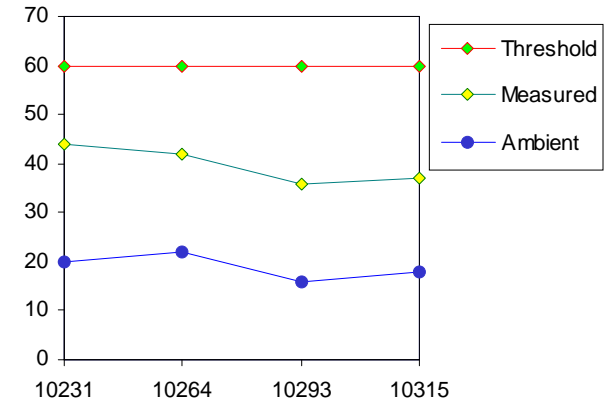


F0419-33.BMP



IMG2004-05-19-30.JPG

Operation Priority: CTO



Inspection History:

| Inspection No | Date Inspected | Test Status | Measured Temp | Threshold Temp | Ambient Temp | Status Note | Customer Notes |
|---------------|----------------|-------------|---------------|----------------|--------------|-------------|----------------|
| 10231 | 19/05/2004 | TESTED | 44 C | 60 C | 20 C | | |
| 10264 | 16/09/2004 | TESTED | 42 C | 60 C | 22 C | | |
| 10293 | 19/01/2005 | TESTED | 36 C | 60 C | 16 C | | |
| 10315 | 19/04/2005 | TESTED | 37 C | 60 C | 18 C | | |

This report was generated by InspecTrend and this inspection was performed by: T.E.V.A. Ltd