

Documentation/Work Order I/C Electrical

Work Order #:

Report Date: 23/07/2004

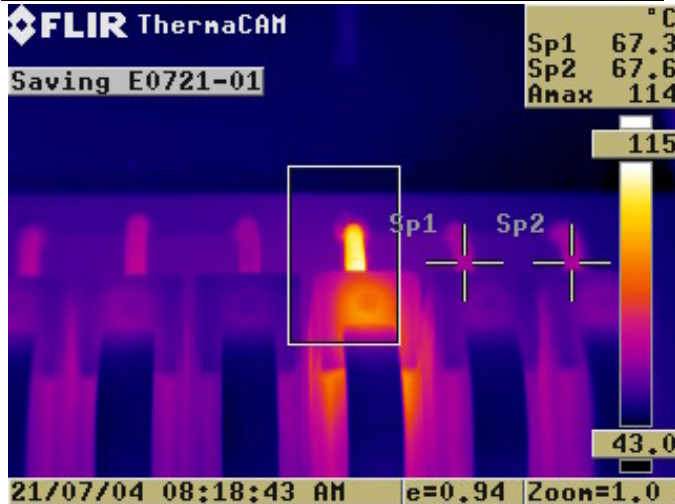
10250-1

Current Prob No: I/C Electrical/1

Location/Equipment Information	
Asset ID:	
Barcode:	
Location:	A MILL MMCC J PANEL
Component:	fuse
Problem:	blue phase heating at cable connection on line side main incomer fuse
Manufacturer:	GEC
Catalog No:	
Model No:	
Circuit Voltage:	660 Volts

Load Test Results	
Component Rated Load:	200 amps
blue phase:	131 amps
red phase:	135 amps
	amps

Thermal Information	
Operation Priority:	Critical to operation
Repair Priority:	1-Critical
Ambient:	28 C Environment: Indoors Wind:
Component Temperature On blue phase:	114 C
red phase Reference Temperature:	67 C
Temperature Rise Above Reference:	47 C
ANSI/EEE/NEMA Max Allowable Temp @ 100% Load	C
Est Temp Rise over reference @ 50% Load:	27
Est Temp Rise over reference @ 100% Load:	108



IR File: E0721-01.BMP

IR Date: 21/07/2004

Photo File: IMG2004-07-21-01.JPG

Photo Date: 21/07/2004

PLEASE FAX BACK AFTER REPAIR

Loss to Production

Yes No Unknown

Repair Information

Consequences of Failure:

Loss of MMCC J PANEL

Parts Req. Before Failure:

Parts Req. After Failure:

Repair Recommendation:

Shut down and inspect connections and cable crimps

Repair Date:

Repaired By:

Root Cause:

Repair Procedure:

Repair Notes: